

trans  
form  
ation

C

afa  
PLUS

2021

trans  
form  
ation

afa  
PLUS

trans

C

# CAFA+ TRANSFORMATION

OCTOBER 16 - NOVEMBER 27, 2021

## A NOTE FROM THE DIRECTOR

Throughout CAFA's 111 year history, our prestigious Annual Show has been a singular and steadfast offering. Since the recent inception of our CAFA+ offerings, we now have the opportunity to create virtual shows that are themed, focused on certain art mediums or reserved for CAFA members only.

The concept for our debut theme show, *Transformation*, was derived from CAFA council member, Bill Butcher's, musings on how change can be seen as a powerful shifting, cyclical force within the natural realm and for some, through a soulful revision that might bear weight on one's personal life often bringing new and positive outcomes. As Bill wrote in his thought provoking description, "we as artists are in a constant state of transformation."

Transformation was thoughtfully interpreted by 108 artists from throughout New England and across the US. Our juror, Brian Flinn, was presented with images reflecting both tranquil and rugged landscapes, scenes depicting spiritual encounters, works capturing seasonal change, and a sensitivity to the aging process. Deserved applause goes to our five award winners for their exceptional works and a huge thank you to all the participating artists and those of you whose work appears in this final show on our calendar for 2021. The Finer Line Gallery in Mystic, CT will display the award winners' works until November 27.

As always, I can't thank you enough for your commitment to support CAFA. Our own transformation has been a positive one and I am so looking forward to next year with a promising new lease on life and a calendar of exciting CAFA+ shows on the horizon.

Gabrielle Robinson

*Director*

## PRESIDENT'S MESSAGE

*Transformation* was envisioned as a part of our CAFA+ series by the CAFA Council at our annual gathering in August. Council member Bill Butcher proposed the theme and its enduring spirit. Gabrielle Robinson, our Director, skillfully organized the show and made it a reality. Then you, the participating artists, brought *Transformation* to life with your wonderful artistry. Thanks to all who responded to the call and submitted their works.

Here's wishing you all the best as we close-out 2021. I'm looking forward to seeing you at our 2022 Annual Exhibition that will be held during the summer at the Sill House on the campus of the Lyme Academy of Fine Arts.



Robert K. Frink  
*President*

## JUROR'S STATEMENT

The desire to celebrate art in all its many forms makes it difficult to omit any works from the final choices of a proposed exhibit, but the ones which have made it into the final selections here represent a combination of evocative imagery, skill in visual language and interesting compositions that align with the theme of *Transformation* which guides the works in this show. The works represent an array of solutions to the theme, from the purely abstract to the photorealistic, and all conjure a sense of what *Transformation* can mean. The theme is broad in its use – there are transformations in every moment – yet specific to our times as well. Being aware of these changes in our lives, in our culture and in our relationships to everything around us is a way of acknowledging the constant in our existence, the transformation of us. These works recognize those changes, and the artists who've created them have brought to us an opportunity for strong reflection on the theme.

Brian Flinn  
*Juror*

## AWARDS



BEST OF SHOW  
Harriet Moore Ballard  
*Through the Window*  
Mixed Media on Canvas



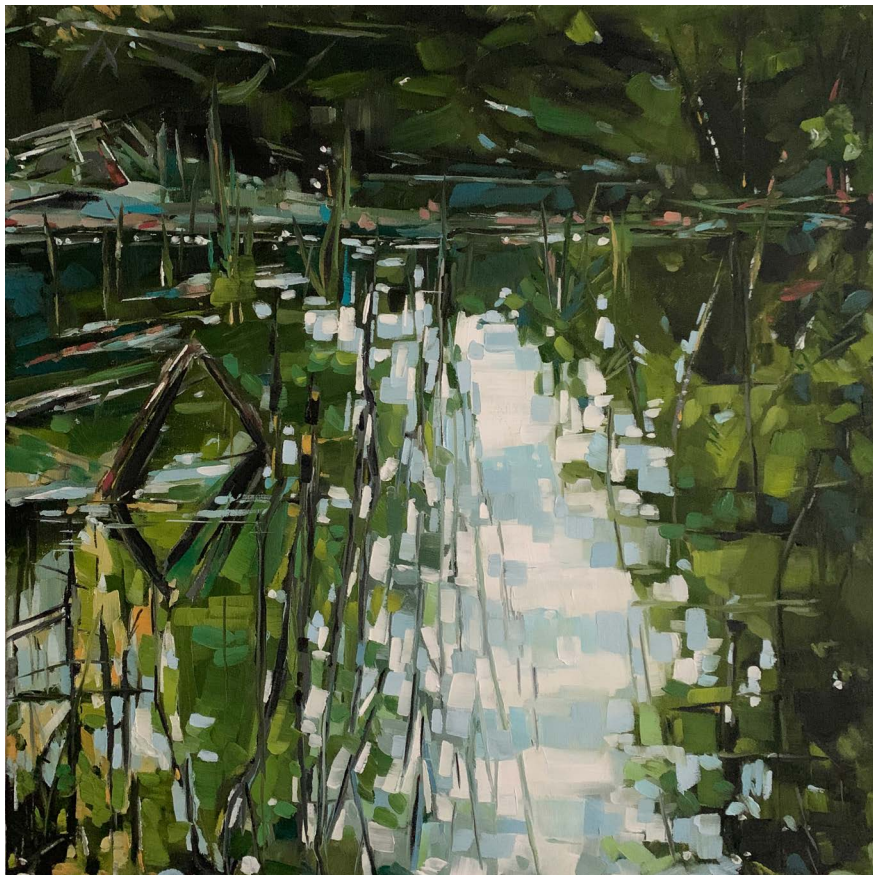


SECOND PLACE

Alfred Ciesluk

*Snowflakes Over Pond*

Photography



THIRD PLACE

Sarah Lightfoot Brundage

*Vibration*

Oil



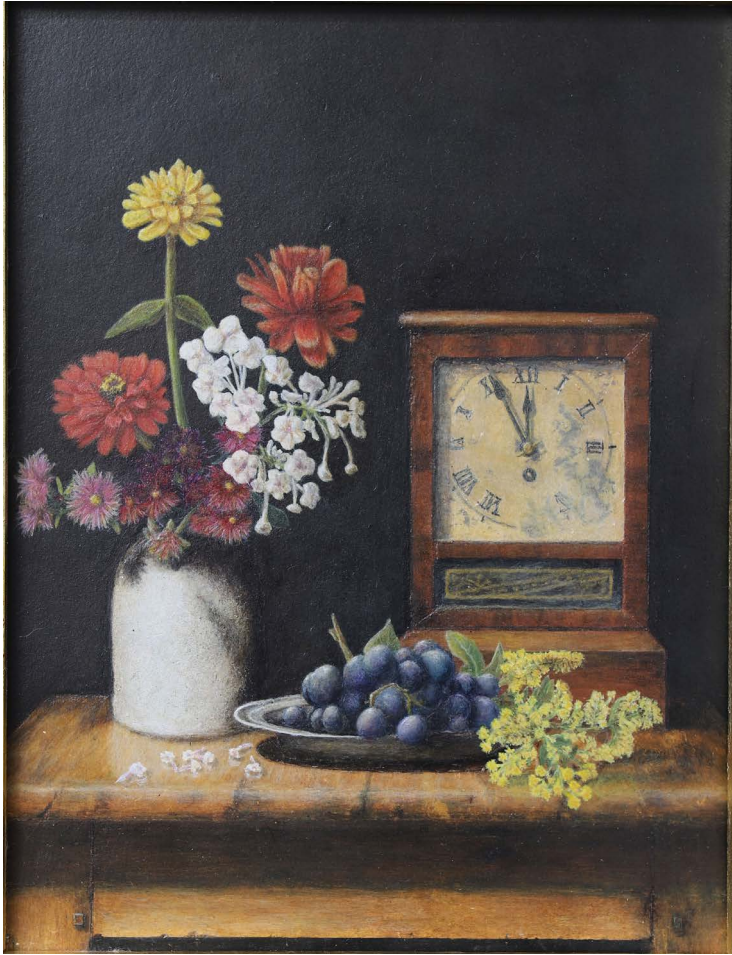
HONORABLE MENTION

Jillian Barber

*Geisha*

Ceramic Sculpture





HONORABLE MENTION

Charles F. Barbour

*Time Swiftly Passes By*

Egg Tempera on True Gesso Panel



## JUROR'S STATEMENTS FOR AWARDS

The First Place winner has created a composition which presents a stark contrast in its use of imagery and its development of space. It offers us a rich array of textures on the surface, and allows us to move from here to there in a transition of tone and mood that should cause us to reflect on both the tangible and illusory. The simplicity of its drawing belies the complexity of its relationships, and the transformations here exist on several levels.

Second place goes to a photograph which is a combination of stunning abstraction housed within a cold, but welcoming landscape. Grounded by the horizon in the background, the dark tones and light values create a dynamic sense of movement through the image. The piece maintains a strong grain from the falling snow that feels visceral in its texture, and it has a volume that resonates both large and low simultaneously.

Third place is a joy of movement using color and texture to hold our vision on a small piece of landscape. The implied surface of the water is broken by bent branches and shoots of grass that dissolve into wonderful plays of light and dark, and the entire piece offers transformations as we move through the work with our eyes.

Both the still-life and sculpture that have earned honorable mentions are delightful works in their celebration of color and time.

The still-life is a subtle approach to tone and texture with careful attention to color and illusory surfaces that are evocative and symbolic. The worn clock face mates perfectly with the wooden tabletop to create an evocation of the past, while the flowers and fruit provide a distinct sense of the present with the hint of time's ravages to come.

The ceramic sculpture provides a play of shape and narrative which combine to form a sense of personality and culture – a rich blend of pattern and traditional imagery re-combined in a contemporary composition. The separate stories related within the circular shapes form a larger comprehensive sense of life – a menagerie that encircles the face like a set of rotating memories, dreams or histories.

# CAFA+ TRANSFORMATION CATALOGUE

• Indicates Award

•Harriet Moore Ballard <i>Through the Window</i> Mixed Media on Canvas	1,000	Paige Bradley <i>Apex</i> Bronze	12,500
Teri Banas <i>Transformation #1</i> Acrylic	1,200	Paige Bradley <i>Expansion Rising</i> Bronze with Electricity	22,000
•Jillian Barber <i>Geisha</i> Ceramic Sculpture	750	Nancy Breakstone <i>Fall on the Pond</i> Photography	700
•Charles F. Barbour <i>Time Swiftly Passes By</i> Egg Tempera on True Gesso Panel	1,800	•Sarah Lightfoot Brundage <i>Vibration</i> Oil	NFS
Mark Battista <i>Out on a Limb</i> Composite Photography	650	William Buchanan <i>After the Storm/Floating Foliage No. 5</i> Acrylic on Canvas	1,800
Brenda L. Bechtel <i>Alfred's Whimsical Hay Baler</i> Oil on Panel	1,860	Jill Abele Butcher <i>Interior Reflections</i> Acrylic	1,500
Dina Belyayeva <i>Warren Falls I</i> Acrylic	600	William Butcher <i>The Miraculous Life Code</i> Acrylic/Foam Board on Canvas	6,500
Dina Belyayeva <i>Warren Falls II</i> Acrylic	630	William Butcher <i>The Transformation</i> Acrylic, Hot Forged Steel, Wood on Canvas	6,500
Lev Bogorov <i>Golden Fall #1</i> Oil on Canvas	9,000	•Alfred Ciesluk <i>Snowflakes Over Pond</i> Photography	350
Kim Bova <i>Reflections Grasp</i> Photographic Giclée Print	175	Michael Covello & Elizabeth Schneider <i>Forgive Me</i> Hand Drawn Animation	500/still

Cynthia B. Crier <i>Life and Death</i> Watercolor	500	Mark Dixon <i>Gretchen's New Do</i> Photography	350
Cynthia B. Crier <i>My Garden: Fall</i> Oil	4,000	Gina Dunlap <i>Terra</i> Oil	950
Claudia Cron <i>Motivity</i> Paper Lithograph	300	Eileen Eder <i>Moose Hill Farm</i> Oil	3,500
Hannah Cole Dahar <i>Unrequited</i> Oil on Panel	2,800	Andrew Engel <i>Linda as Modern Mona</i> Oil on Canvas	1,200
Diane Daut-Bassin <i>Steadfast Spirits</i> Acrylic on Canvas	3,700	Andrew Engel <i>The Seasons and My Building</i> Oil on Canvas	1,200
Mary Davidson <i>My New Hat Series #36</i> Acrylic	1,800	Michael Fanelli <i>Small Branches I</i> Photographic Pigment Print	350
Mary Davidson <i>My New Hat Series #59</i> Acrylic	1,570	Lucien Flotte <i>Nocturnal Blooming Epiphyllum Oxyptalum, Nicknamed "The Queen of the Night"</i> Photography	400
Rita Dawley <i>Midnight Strut</i> Mixed Media	POR	Lucien Flotte <i>Philomela</i> Photography	400
Rita Dawley <i>The Isolated Couple</i> Mixed Media	800	Lynn Frink <i>Storied Lives</i> Oil	3,000
Lorraine DeMauro <i>Maui Bob, Remembering...</i> Acrylic	450	Susan Funk <i>Intrusion of Life Amongst the Detritus</i> Mixed Media	3,600



Susan Funk <i>Summer Idyll</i> Acrylic	1,800	Nils Johnson <i>Heading Out</i> Oil on Canvas	3,500
Nancy L. Greco <i>Lamassu</i> Graphite on Paper	NFS	Nathan Katz <i>Feeling the Fall</i> Oil	3,200
Eddie Hall <i>Descending</i> Acrylic on Recycled Window	950	Linda King <i>Abandoned</i> Mixed Media Collage	800
Leonard Hellerman <i>Abandoned Quarry</i> Photography	225	Peter Knapp <i>Garden of Geometric Insights</i> Mixed Media and Collage	12,500
Jane Hopkins <i>Sand and Water Mandala</i> Archival Digital Print	345	Marthan Laurinitis <i>Lily 2</i> Pastel	NFS
Renée S. Hughes <i>Difficulties Become Opportunities</i> Mixed Media on Panel	800	Marny Lawton <i>Reflections: Water's Edge</i> Oil on Canvas	1,500
Karen Israel <i>Autumn Alchemy</i> Pastel	NFS	Marny Lawton <i>Standing Water Bedlam</i> Oil on Canvas	1,500
Karen Israel <i>Rock n' Roil</i> Pastel	NFS	Marilyn McShane Levine <i>"Weathering" Heights</i> Photography	350
Joan Jardine <i>Yellow Bird</i> Oil on Paper	2,100	Jim Liedtke <i>Aleutian Bentwood Hat, Caribbean Holiday</i> Western Hemlock Wood, Basswood, Ceramic Beads	NFS
Mimi Jigarjian <i>Almost Lemonade</i> Oil	550	Patti Lizotte <i>Trio</i> Oil on Panel	NFS

Lexica MacCraday <i>Phantom, Fire Shadow 0287</i> Acrylic on Arches Platine on Canvas	1,800	Pamela S. Morgan <i>Reflected Stars</i> Watercolor	850
Lexica MacCraday <i>Tea, Sea Rager</i> Acrylic on Arches Platine	1,800	Paul M. Murray <i>Sand Fog</i> Photography	995
Charles McCaughtry <i>October Wind</i> Watercolor	1,100	Julie O'Connor <i>Anamorphic Illusion in the Heart of Montreal</i> Digital Archival Photograph Sublimated to Aluminum	180
Linda McCord <i>46 Ford Coupe</i> Acrylic on Canvas	4,000	Howard Park <i>Barn Island</i> Oil on Panel	2,400
Lori Mehta <i>Fly Away</i> Oil on Cradled Board	5,500	Howard Park <i>Mystic Shipyard</i> Oil on Panel	1,400
Lori Mehta <i>Nest</i> Oil on Cradled Board	NFS	Deborah Perlman <i>Secret Woods</i> Paper	1,250
Lawrence Mello <i>Infusion 10</i> Oil	5,500	Elaine Porter <i>A Season of Change</i> Mixed Media	700
Lawrence Mello <i>Once Upon a Time</i> Graphite and Colored Pencil	550	Gregory Presley <i>Once Upon a Bridge</i> Black and White Photography	400
Lisa Miceli <i>Nature's Hand</i> Oil on Panel	750	Scott Rhoades <i>Fall Into Winter</i> Acrylic	1,800
Billy Montella, Jr. <i>Evening to Morning</i> Oil Diptych	800	R. Douglass Rice <i>Colliding Worlds</i> Aluminum	8,500

Marley Robinson <i>Intrusion</i> Photography	200	Mary Burk Smith <i>Botanical Prism VII</i> Mixed Media Collage	350
Dolores Rollins <i>Preddy Creek Horses</i> Acrylic on Paper	1,000	Lucia Sokol <i>Early Fall</i> Watercolor	425
Janet Bogon Romanowski <i>Dream or Dare 2</i> Oil	500	Thomas Stavovy <i>Untitled 2</i> Monotype	400
Allie Sabalis <i>Autumn Afternoon</i> Watercolor on Arches	3,500	Kate Sullivan <i>Middleboro Diesel</i> Watercolor	1,200
Nick Salerno <i>Mystic Bridge</i> Acrylic	600	Michele Tragakiss <i>Gradually Then Suddenly</i> Acrylic, Ink, Glaze	NFS
Cheryl M. Seaver <i>Emerging</i> Oil	600	Michele Tragakiss <i>The Door is Open</i> Acrylic, Ink, Glaze	1,800
Peter Seltzer <i>Alchemy</i> Pastel	NFS	Meg Tweedy <i>Family Tree</i> Mixed Media	600
Eugene Shcherba <i>Mountain Autumn</i> Oil on Canvas	850	Claudia Van Nes <i>Just Before They Fall</i> Watercolor	475
Barbara Simonson <i>Newtonian</i> Mixed Media	1,400	Sharon Whitham <i>No Puffin</i> Printmaking, Monotype, Oil on Paper	1,500
William M. Simpson <i>Fishing With Nick</i> Charcoal on Paper	3,500	Karin Forde Whittemore <i>The Inner Tour</i> Archival Digital Photography	200



# CONNECTICUT ACADEMY OF FINE ARTS



## **Council and Officers**

Gabrielle Robinson, *Director*

Robert K. Frink, *President*

Leonard Hellerman, *Vice President*

Marley Robinson, *Treasurer*

## **Board Members**

William Butcher

Rita Dawley

Betty Hellerman

Sean Kane

Layne

Karin Forde Whittemore

## **Finer Line Gallery**

48 West Main Street

Mystic, Connecticut 06355

Phone: 860.536.8339

Email: [info@finerlinegallery.com](mailto:info@finerlinegallery.com)

Website: [finerlinegallery.com](http://finerlinegallery.com)

## **CAFA Founders' Mission**

The Connecticut Academy of Fine Arts was established in 1910 by a group of renowned Connecticut artists whose goal was to promote the work of local artists. They achieved this through the establishment of an annual salon show, a juried exhibition that featured work of the highest standards of artistic excellence.

## **Membership**

Membership is available at three levels, Elected, Associate and Supporting. To be eligible for CAFA Elected status an artist must have been accepted in at least three Annual Juried CAFA exhibitions. For more information visit: [ctacademy.org](http://ctacademy.org).

## **Contact**

Phone: 860.415.6177

Email: [ctacademy.cafa@outlook.com](mailto:ctacademy.cafa@outlook.com)

Website: [ctacademy.org](http://ctacademy.org)

Copyright © 2021 by CAFA

Front Cover designed by Marley Robinson

